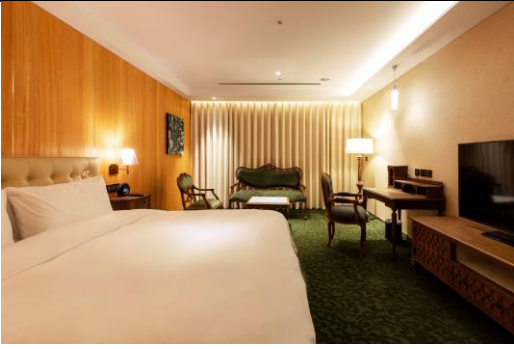






**DEST 2021 Special Accommodation Offer(11/6-11/7)**

<b>Inhouse Hotel Grand</b> : No. 228, Wuquan Rd., North Dist., Taichung City 404, Taiwan (R.O.C.) Reservation : TEL : +886-4-2201-6111 · FAX : +886-4-2208-2111 · E-mail : inhouse.grand@inhousehotel.com					
Room Type	Beds	m <sup>2</sup>	Room Rate	SAT	Remarks
Standard Room	Double / Twin	33-43 m <sup>2</sup>	NT\$8,000+10%	NT\$3,400	breakfast for 2 pax
					
Standard Room(Double)		Standard Room(Twin)			
Elite Room	Double	56 m <sup>2</sup>	NT\$12,800+10%	NT\$3,900	breakfast for 2 pax
					
Family Room	Two Double	46-53 m <sup>2</sup>	NT\$12,000+10%	NT\$5,000	breakfast for 4 pax
					
Premium Suite	Double	63-76 m <sup>2</sup>	NT\$14,000+10%	NT\$4,300	breakfast for 2 pax
					
<b>Our amenities :</b>					
⊙Free parking	⊙Free WiFi	⊙Non-smoking rooms	⊙On-site restaurant	⊙Fitness center	
⊙Pets not allowed					

## Noticed

- ✘ The above room rates are inclusive of a 10% service charge and a 5% VAT
- ✘ The above rates are not applicable during the Lunar New Year, National holidays, and other special events. The definition of holidays depends on each hotel of Inhouse Hotel Group
- ✘ Please kindly advise your company name and VAT number to help us provide correct preferential for you.
- ✘ The accommodation time is after 15:00 and the check-out time is before 11:00 the next day in InHouse Hotel Grand.
- ✘ If the room rate is charged by the firm, please kindly fill out the confirmation form and send back to the reservation department before guest check-out.
- ✘ Please kindly contact with the reservation of each hotel about your need for additional guest.
- ✘ The preferential rate is only for business guest only. If there are other request, please kindly contact with the reservation department.
- ✘ Please be aware that hotel reserves the right to a prior and reasonable announcement.
- ✘ This preferential contract is made in two copies, and each party holds a copy.

## Deposit Policy

To guarantee your reservation, please prepay the deposit (30% of the total room rate)

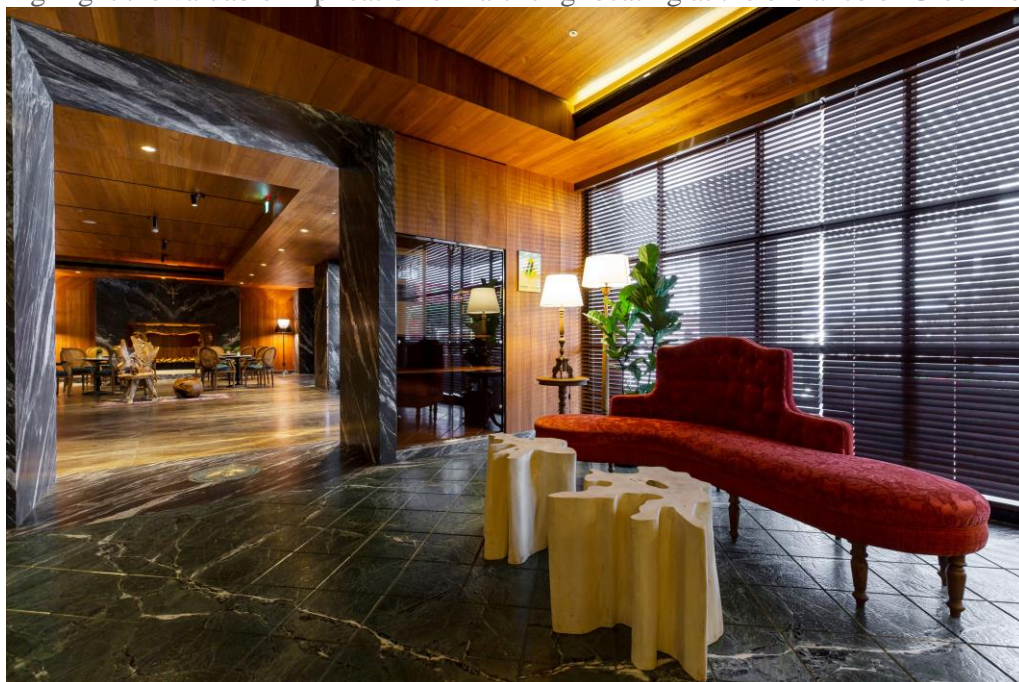
## Cancelation Policy

Please be advised that cancellation of guaranteed room reservation must be made before 6 p.m. hotel time, 1 day prior to the arrival day. Otherwise, confirmed one night room charge will be applied.

## **about us**

Inhouse Hotel Grand located at the heart of Taichung City, the connection joint between the newly reconsolidated and traditional culture area. The best choice for travel and business!

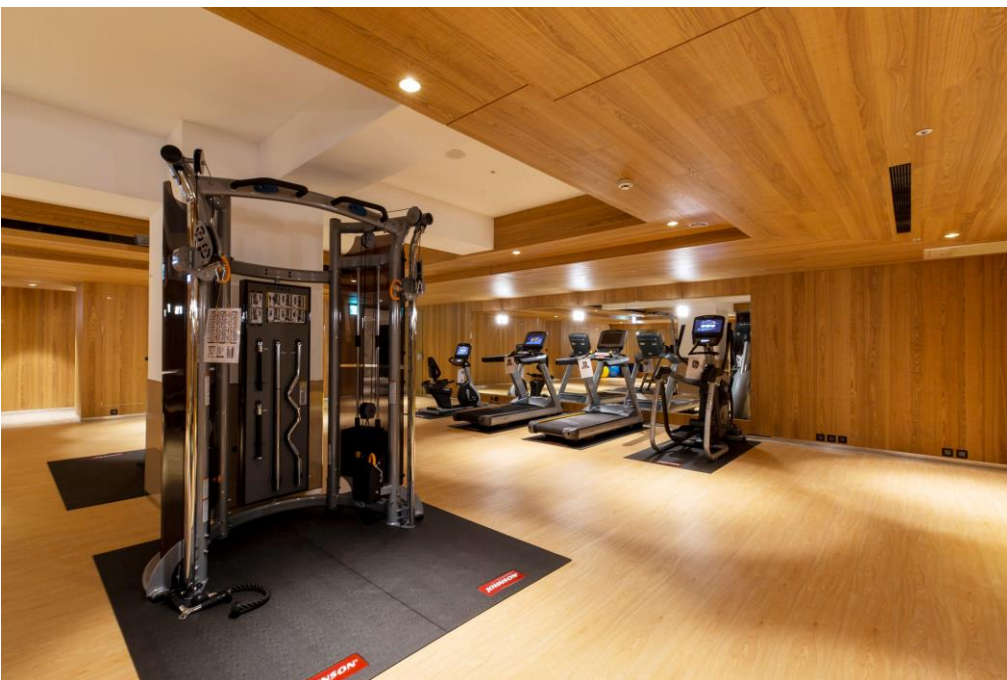
The design of the entire Inhouse Hotel Grand was created by our renowned Inhouse Design Team based on the spirit of the urban resort with their careful planning and delicate craftsmanship. The planting art provided by the top-notch Taiwan floral design team demonstrates the Taiwan value and inspire the beauty planting in Taiwan. Exclusive artist KMC for Inhouse Hotel also create works for Taiwan Native Plants through methods such as hand drawings and photography to exhibit the environmental art spirit for our Inhouse Hotel Grand. Therefore, highlight the valuable implication of Taichung locating at the entrance of Green Tunnel of Taiwan!



Hotel Lobby



INN CAFÉ



Fitness center



Sky Pool